



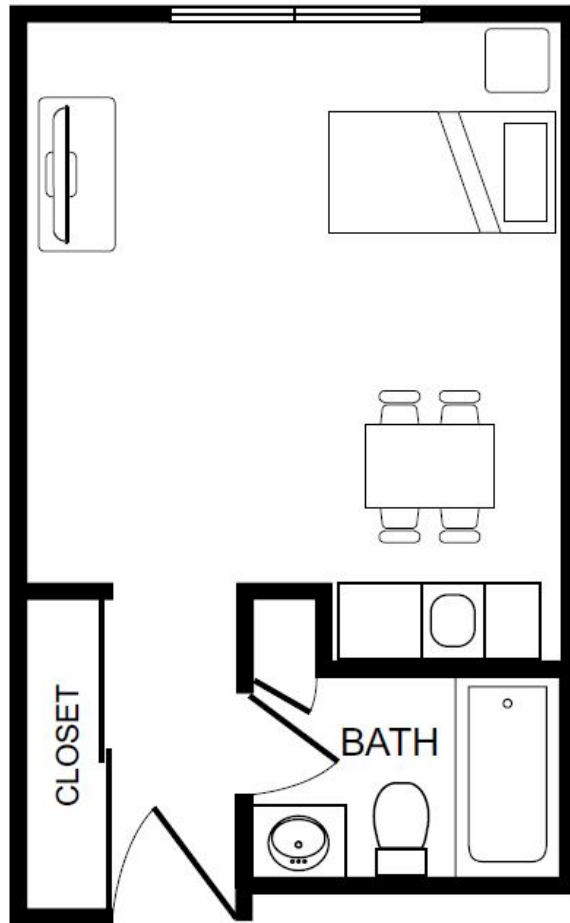
# Monticello West

A LIFE CARE SERVICES® COMMUNITY

ASSISTED LIVING

## The Mount Vernon A

Studio • 315 sq. ft.



Date \_\_\_\_\_ Apartment # \_\_\_\_\_ Rep Name \_\_\_\_\_

Community Fee \$ \_\_\_\_\_

Other \$ \_\_\_\_\_

Total \$ \_\_\_\_\_

Monthly Fee \$ \_\_\_\_\_

2nd Person Fee \$ \_\_\_\_\_

Total Monthly Fee \$ \_\_\_\_\_

*Prices subject to change without notice.*





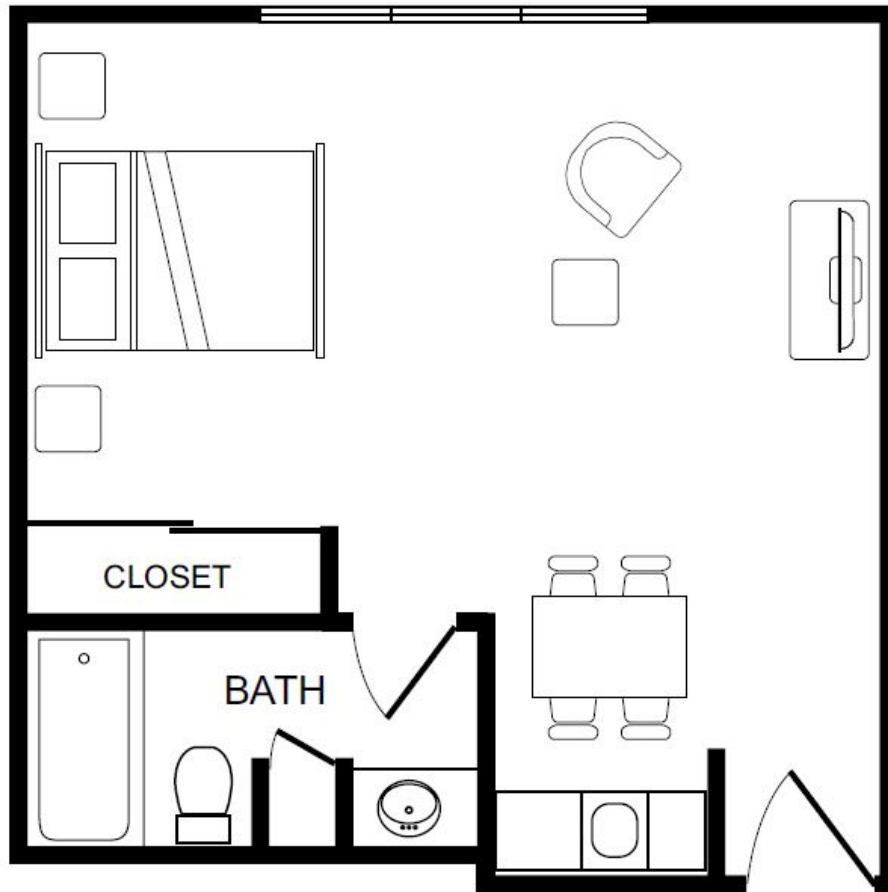
# Monticello West

A LIFE CARE SERVICES® COMMUNITY

ASSISTED LIVING

## The Jefferson A

Efficiency • 425 sq. ft.



Date \_\_\_\_\_ Apartment # \_\_\_\_\_ Rep Name \_\_\_\_\_

Community Fee \$ \_\_\_\_\_

Other \$ \_\_\_\_\_

Total \$ \_\_\_\_\_

Monthly Fee \$ \_\_\_\_\_

2nd Person Fee \$ \_\_\_\_\_

Total Monthly Fee \$ \_\_\_\_\_

*Prices subject to change without notice.*





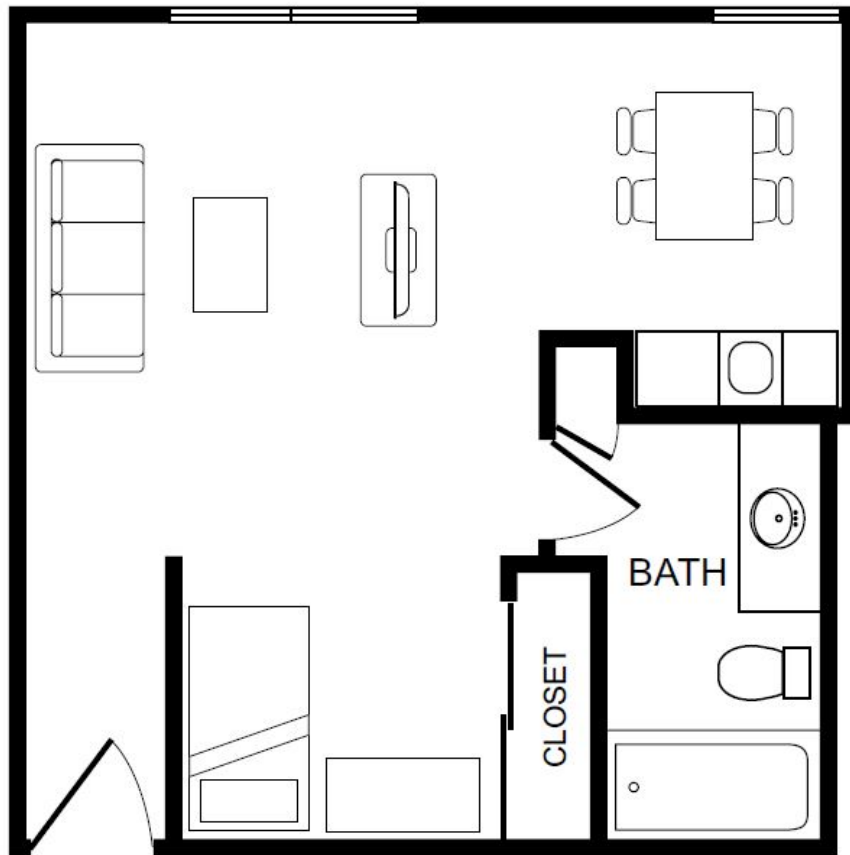
# Monticello West

A LIFE CARE SERVICES® COMMUNITY

ASSISTED LIVING

## The Jefferson B

Efficiency • 425 sq. ft.



Date \_\_\_\_\_ Apartment # \_\_\_\_\_ Rep Name \_\_\_\_\_

Community Fee \$ \_\_\_\_\_

Other \$ \_\_\_\_\_

Total \$ \_\_\_\_\_

Monthly Fee \$ \_\_\_\_\_

2nd Person Fee \$ \_\_\_\_\_

Total Monthly Fee \$ \_\_\_\_\_

*Prices subject to change without notice.*





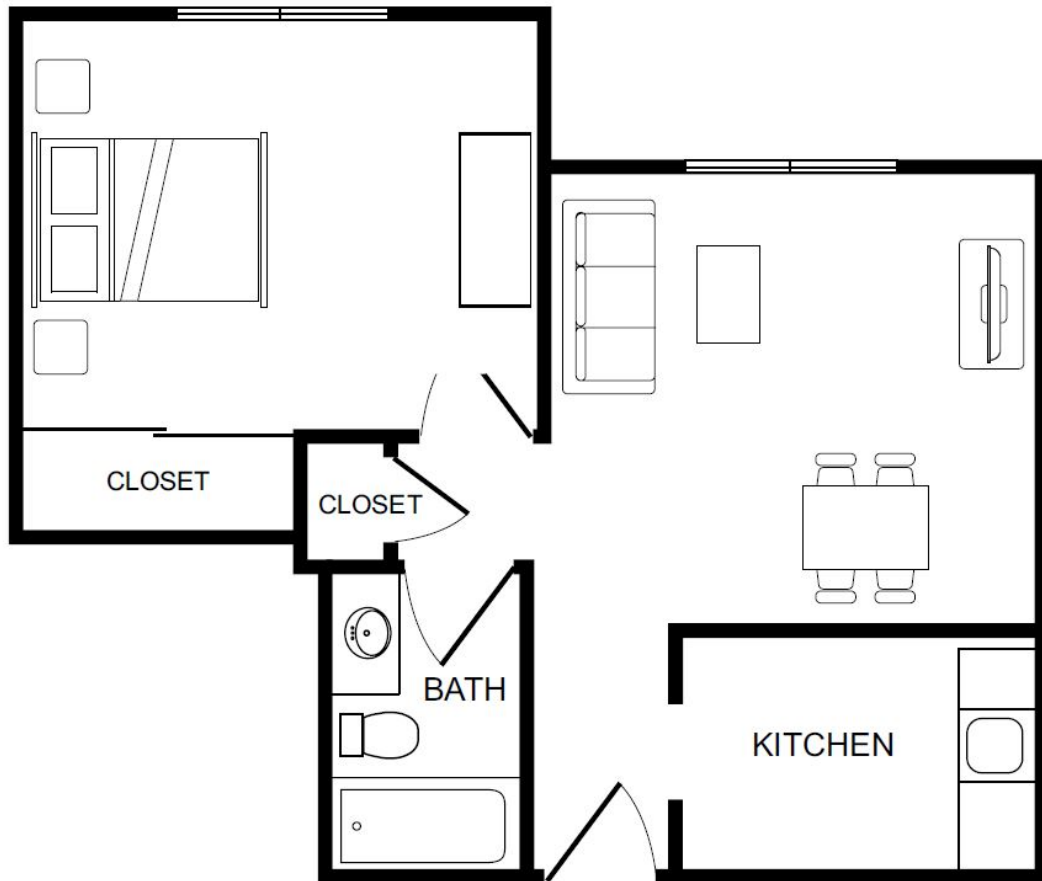
# Monticello West

A LIFE CARE SERVICES® COMMUNITY

ASSISTED LIVING

## The Montpelier A

1 Bedroom, 1 Bath • 525 sq. ft.



Date \_\_\_\_\_ Apartment # \_\_\_\_\_ Rep Name \_\_\_\_\_

Community Fee \$ \_\_\_\_\_

Other \$ \_\_\_\_\_

Total \$ \_\_\_\_\_

Monthly Fee \$ \_\_\_\_\_

2nd Person Fee \$ \_\_\_\_\_

Total Monthly Fee \$ \_\_\_\_\_

*Prices subject to change without notice.*





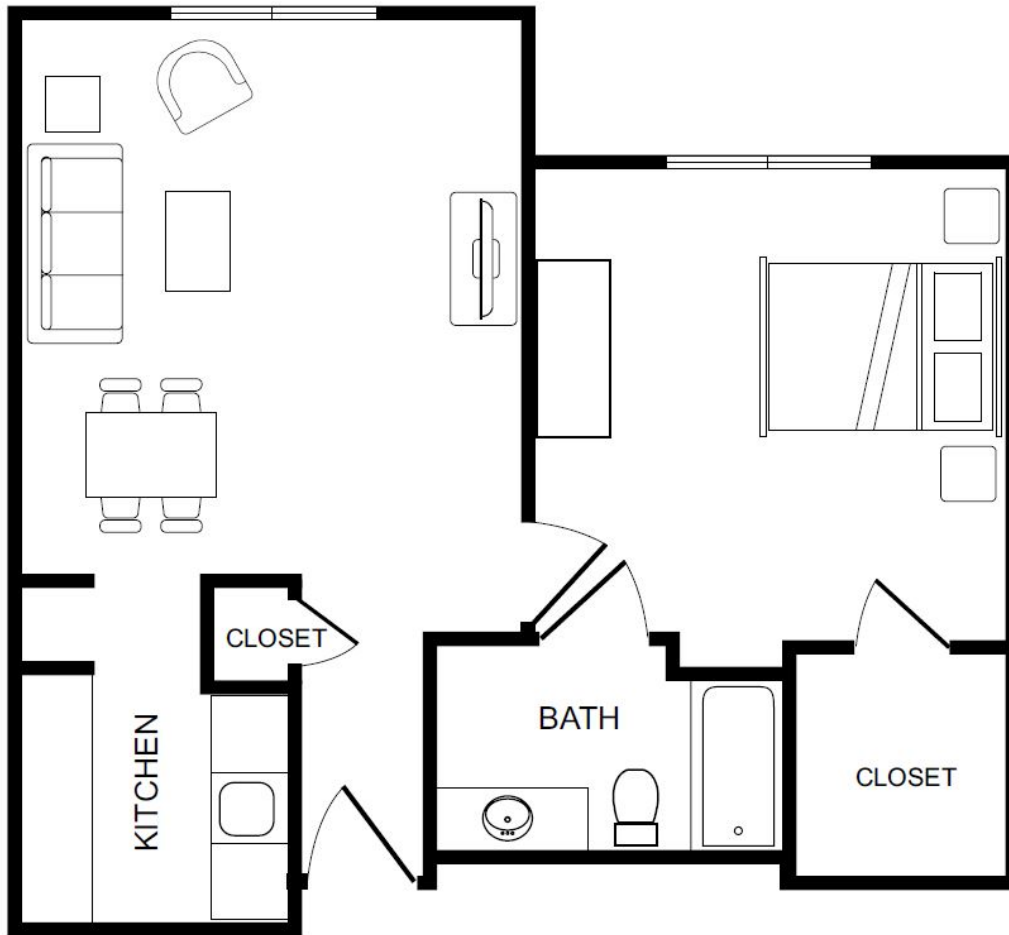
# Monticello West

A LIFE CARE SERVICES® COMMUNITY

ASSISTED LIVING

## The Montpelier B

1 Bedroom, 1 Bath • 625 sq. ft.



Date \_\_\_\_\_ Apartment # \_\_\_\_\_ Rep Name \_\_\_\_\_

Community Fee \$ \_\_\_\_\_

Other \$ \_\_\_\_\_

Total \$ \_\_\_\_\_

Monthly Fee \$ \_\_\_\_\_

2nd Person Fee \$ \_\_\_\_\_

Total Monthly Fee \$ \_\_\_\_\_

*Prices subject to change without notice.*

5114 McKinney Avenue, Dallas, TX 75205 • P (214) 528-0660 • F (214) 520-2511 • [MonticelloWestLCS.com](http://MonticelloWestLCS.com)





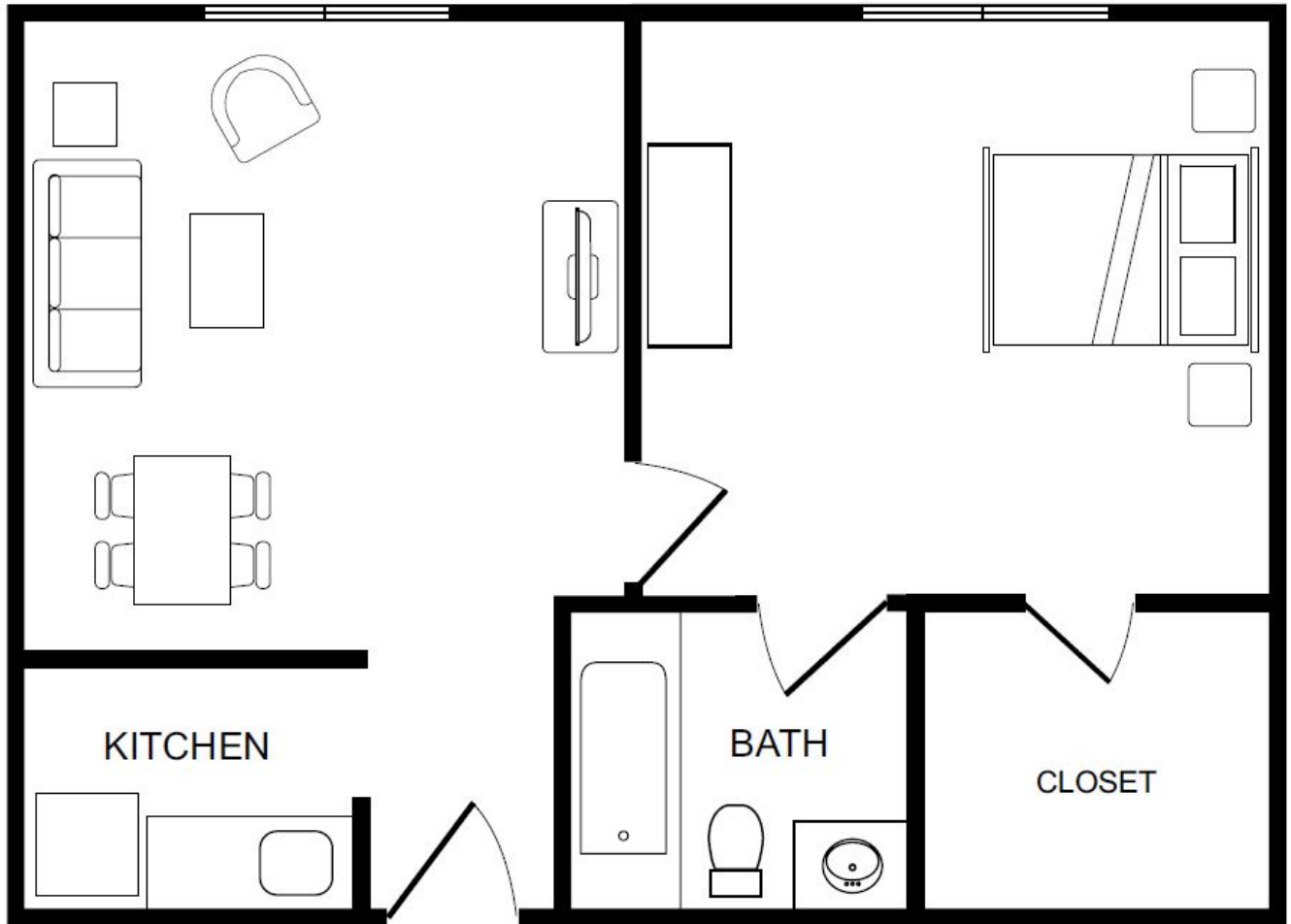
# Monticello West

A LIFE CARE SERVICES® COMMUNITY

ASSISTED LIVING

## The Constitution

1 Bedroom, 1 Bath • 630-670 sq. ft.



Date \_\_\_\_\_ Apartment # \_\_\_\_\_ Rep Name \_\_\_\_\_

Community Fee \$ \_\_\_\_\_

Other \$ \_\_\_\_\_

Total \$ \_\_\_\_\_

Monthly Fee \$ \_\_\_\_\_

2nd Person Fee \$ \_\_\_\_\_

Total Monthly Fee \$ \_\_\_\_\_

*Prices subject to change without notice.*





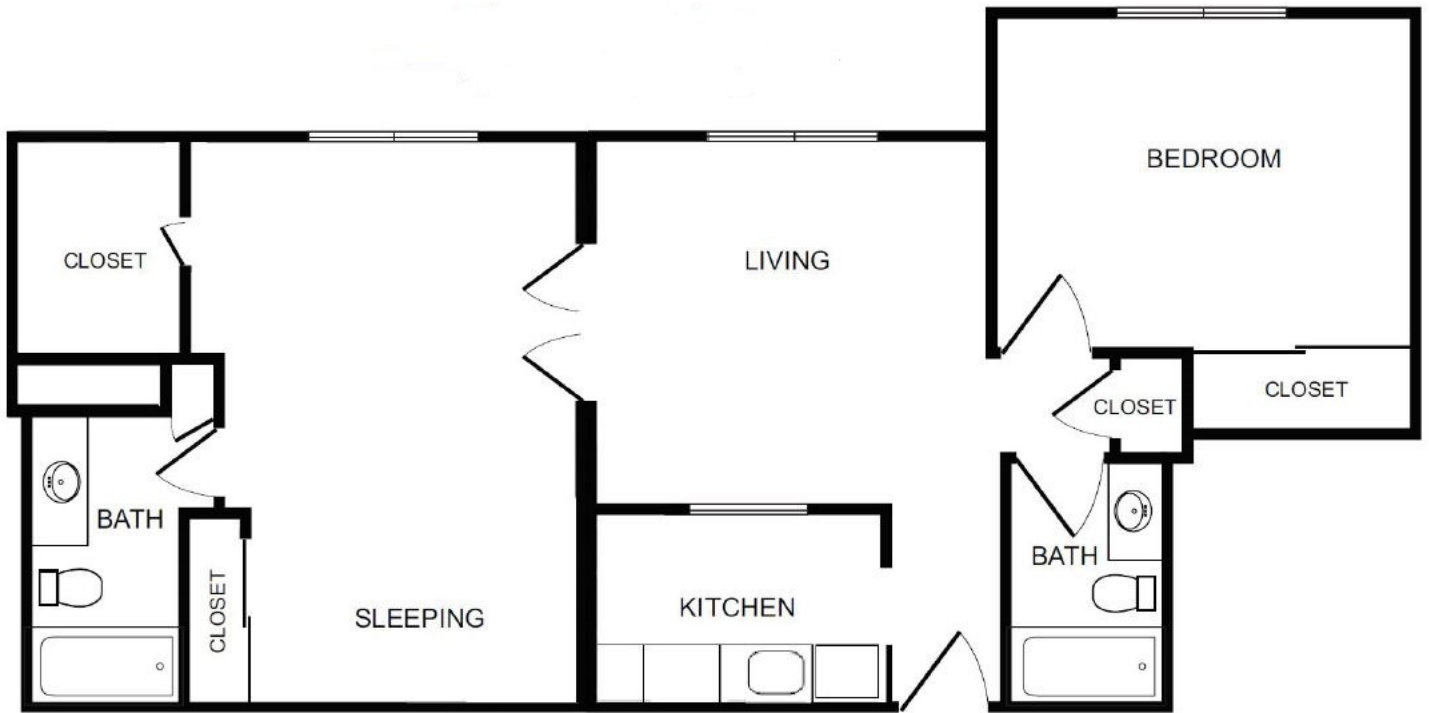
# Monticello West

A LIFE CARE SERVICES® COMMUNITY

ASSISTED LIVING

## The Virginian

2 Bedroom, 2 Bath • 975 sq. ft.



Date \_\_\_\_\_ Apartment # \_\_\_\_\_ Rep Name \_\_\_\_\_

Community Fee \$ \_\_\_\_\_

Other \$ \_\_\_\_\_

Total \$ \_\_\_\_\_

Monthly Fee \$ \_\_\_\_\_

2nd Person Fee \$ \_\_\_\_\_

Total Monthly Fee \$ \_\_\_\_\_

*Prices subject to change without notice.*

5114 McKinney Avenue, Dallas, TX 75205 • P (214) 528-0660 • F (214) 520-2511 • [MonticelloWestLCS.com](http://MonticelloWestLCS.com)

